

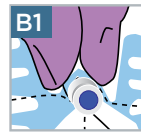


SORBAVIEW SHIELD IS A ONE-STEP, CATHETER SECUREMENT SYSTEM THAT COMBINES THE FEATURES AND BENEFITS OF A SORBAVIEW DRESSING WITH SHIELD TECHNOLOGY.

## APPLICATION

Prep well **beyond** entire dressing site according to facility protocol to ensure dressing adherence. **Allow prep to dry completely.** This usually takes less than one minute. Note: If the prep doesn't dry completely, the integrity and security of the dressing may be compromised. A skin protectant may be used according to preference or protocol. **Allow skin protectant to dry completely.**

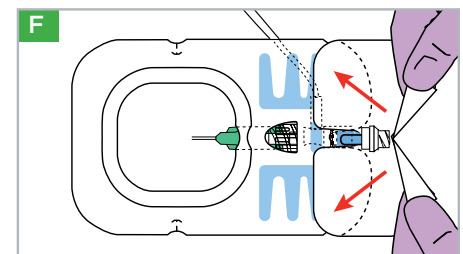
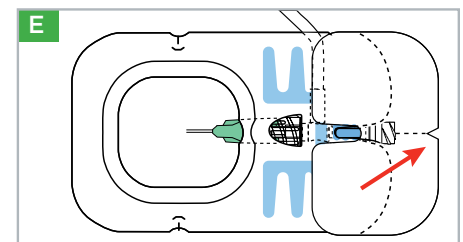
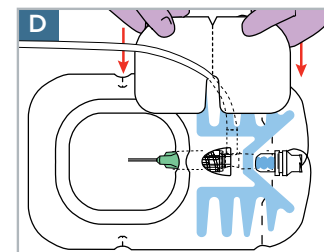
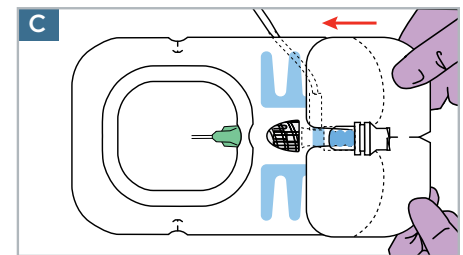
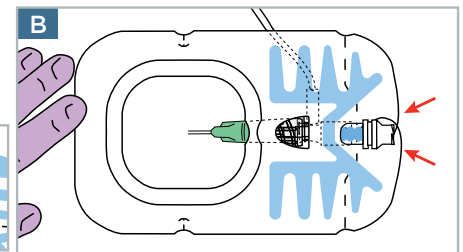
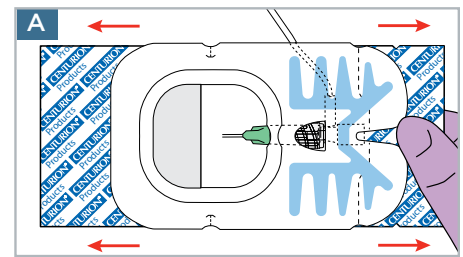
Note: Liner has a label attached that can be used later to record information. Remove larger liner without touching adhesive (set aside liner). Center window over insertion site and align valve axis with the notch (**Figure A**). Remove remaining liner and guide valve out through dressing notch. Seal notch sides down and around valve (**Figure B1**).



From center outward, firmly smooth entire dressing to ensure all edges are adhered well. Exit site edges should be touching or overlapping (**Figure B**).

Without removing the liner, slip closure piece snugly either **under** the valve and **over** edge of dressing, covering opened perforated edge (**Figure C**) OR under tubing and over edge of dressing (**Figure D**). Remove liner one side at a time and smooth down to adhere properly to the skin.

Record information on label, remove from liner and position label on the edge of the dressing.



## REMOVAL

Locate v-notch on outer edge of closure piece (**Figure E**) and pull apart in opposite directions to break center perforations (**Figure F**).

Holding the catheter in place, gently peel back closure piece and dressing together as one piece. Peel back slowly, keeping dressing close to the skin, following catheter toward insertion site (**Figure F**).

Optional: Use an alcohol prep pad underneath dressing while peeling back to help deactivate the adhesive.

SorbaView SHIELD and SHIELD Technology are the proprietary property of Centurion Medical Products.  
SorbaView SHIELD is only available in sterile individual packs or sterile trays manufactured by Centurion Medical Products.

## CENTURION MEDICAL PRODUCTS

100 CENTURION WAY | P.O. BOX 510 | WILLIAMSTON | MICHIGAN | 48895  
USA | 517.546.5400 | 800.248.4058 | www.centurionmp.com | [www.sorbaviewshield.com](http://www.sorbaviewshield.com)

SV254 | UD25  
IS328bLv1\_SV254\_tvalve 02-27-12  
©2012 Centurion Medical Products Corporation