



SORBAVIEW SHIELD IS A ONE-STEP, CATHETER SECUREMENT SYSTEM THAT COMBINES THE FEATURES AND BENEFITS OF A SORBAVIEW DRESSING WITH SHIELD TECHNOLOGY.

APPLICATION

Prep well **beyond** entire dressing site according to facility protocol to ensure dressing adherence. **Allow prep to dry completely.** This usually takes less than one minute. Note: If the prep doesn't dry completely, the integrity and security of the dressing may be compromised. A skin protectant may be used according to preference or protocol. **Allow skin protectant to dry completely.**

Optional: Apply BIOPATCH® Protective Disk* over insertion site per hospital protocol, blue and printed side up.

Note: Liner has a label attached that can be used later to record information. Remove larger liner without touching adhesive (set aside liner). Center the insertion site in large window and align adhesive-free zone over BIOPATCH® (Figure A). Adhere dressing to skin.

Remove remaining liner, allowing catheter hub to be visible in large or small window. Guide tubing out through notch and overlap the edges to form a seal (Figure B1). Exit site edges should be touching or overlapping (Figure B). From center outward, firmly smooth down entire dressing to ensure all edges are adhered well.

Without removing the liner, slip the closure piece **under** tubing and **over** edge of dressing (Figure C). Remove the liner one side at a time and smooth down to adhere.

Record information on label, remove from liner and position label on the edge of the dressing.

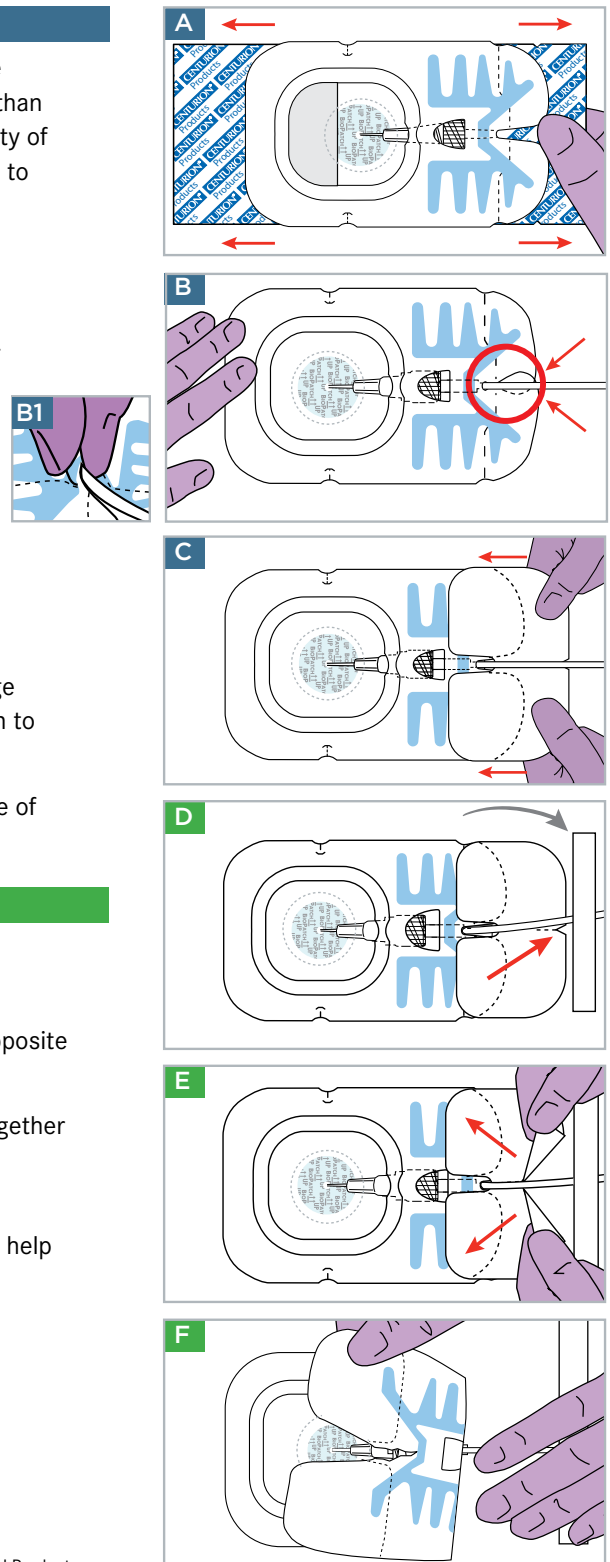
REMOVAL

Optional: A tape strip may be used to secure catheter tubing during removal (Figure D).

Locate v-notch on outer edge of closure piece (Figure D) and pull apart in opposite directions to break center perforations (Figure E).

Holding the catheter in place, gently peel back closure piece and dressing together as one piece. Peel back slowly, keeping dressing close to the skin, following catheter toward insertion site (Figure F).

Optional: Use an alcohol prep pad underneath dressing while peeling back to help deactivate the adhesive.



*BIOPATCH® is a registered trademark, ETHICON, INC.

*For more information see manufacturer's instructions for use.

SorbaView SHIELD and SHIELD Technology are the proprietary property of Centurion Medical Products.

SorbaView SHIELD is only available in sterile individual packs or sterile trays manufactured by Centurion Medical Products.

CENTURION MEDICAL PRODUCTS

100 CENTURION WAY | P.O. BOX 510 | WILLIAMSTON | MICHIGAN | 48895
USA | 517.546.5400 | 800.248.4058 | www.centurionmp.com | www.sorbaviewshield.com

SV254AFX | UD25
IS328cLv1_SV254AFX_BP 022712
©2012 Centurion Medical Products Corporation