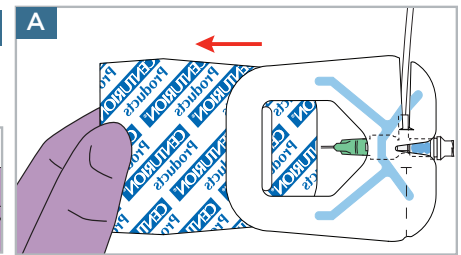
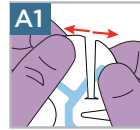




SORBAVIEW SHIELD IS A ONE-STEP CATHETER SECUREMENT SYSTEM THAT COMBINES THE FEATURES AND BENEFITS OF A SORBAVIEW DRESSING WITH SHIELD TECHNOLOGY.

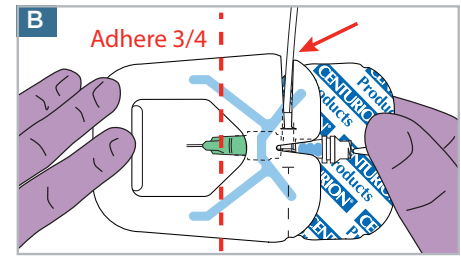
APPLICATION

Prep well **beyond** entire dressing site according to facility protocol to ensure dressing adherence. **Allow prep to dry completely.** This usually takes less than one minute. Note: If the prep doesn't dry completely, the integrity and security of the dressing may be compromised. A skin protectant may be used according to preference or protocol. **Allow skin protectant to dry completely.**

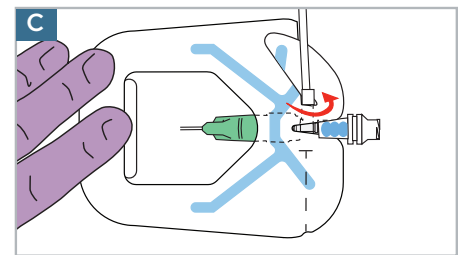


Optional: For pediatric patients below full term and neonates up to 2 months of age, a skin protectant is suggested.

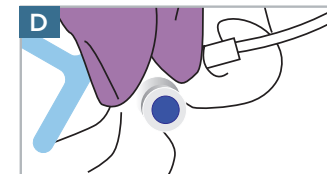
Open perforation completely on the desired side (**Figure A1**). Remove large liner (with label) without touching adhesive and set it aside for future use (**Figure A**). Align window over insertion site, align side port tubing with the opened perf and the valve with the notch. Then, adhere approximately 3/4 of dressing window to skin (**Figure B**). Remove remaining liner (**Figure B**). Guide the tubing out through opened perforation and adhere dressing to skin, except for the flap (**Figure B**).



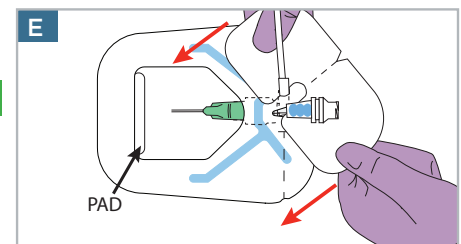
Wrap perforated flap under side port and back on top of dressing (**Figure C**).



Guide valve out through dressing notch. Seal notch sides down around valve (**Figure D**). From center outward, firmly smooth entire dressing to ensure all edges have adhered well.



Without removing the liner, slip the closure piece snugly **under** tubing and valve and **over** edges of dressing (**Figure E**). Remove the liner one side at a time and smooth down to adhere, while simultaneously wrapping around and snugging up.



Record information on label, remove from liner and position label on the edge of the dressing.

REMOVAL

Carefully peel up the closure piece and the part of the dressing it covers, together with the valve and side port tubing **all as one unit**, pulling toward and stopping at, the insertion site.

Next, peel dressing edges up, all around dressing working from the pad end toward insertion site until all adhesive is up.

Now remove the catheter lumen from the vein, along with the T-valve extension set, dressing and closure piece together **as a single unit**. Discard per facility protocol.

SorbaView SHIELD and SHIELD Technology are the proprietary property of Centurion Medical Products.
SorbaView SHIELD is only available in sterile individual packs or sterile trays manufactured by Centurion Medical Products.

CENTURION MEDICAL PRODUCTS

100 CENTURION WAY | WILLIAMSTON | MICHIGAN | 48895
USA | 800.248.4058 | www.centurionmp.com | www.sorbaviewshield.com

SV226 | UD28
IS384bLv1_SV226_tvavle 051612
©2012 Centurion Medical Products Corporation